

AVAILABLE FOR LEASE

±8,600-18,100 SF ON ±2.0-±4.5 ACRES OF LAND

1369-1379
W. 9TH ST.
UPLAND | CA 91786



FOR MORE INFORMATION, CONTACT:

ERIC BURNEY, SIOR
EXECUTIVE VICE PRESIDENT
P: 909.652.9051
E: Eric.Burney@daumcommercial.com
CA DRE #00697556

JOSH BURNEY
ASSOCIATE
P: 909.912.0015 | M: 909.974.8163
E: jburney@daumcommercial.com
CA DRE # 02193758

DAUM
COMMERCIAL REAL ESTATE SERVICES

Although all information is furnished regarding for sale, rental or financing from sources deemed reliable, such information has not been verified and no express representation is made nor is any to be implied as to the accuracy thereof, and it is submitted subject to errors, omissions, changes of price, rental or other conditions, prior sale, lease or financing, or withdrawal without notice. All Maps provided courtesy of Google Maps, Bing Maps, and Google Earth. D/AQ Corp. # 01129558

PROPERTY HIGHLIGHTS



Two Buildings
±8,600 - 18,100 SF
on ±2.0-4.5 Acres of Land



1G Fiber Spectrum
Internet



Zoning
LI - Upland



Three (3)
Driveways
(20' - 40' - 40' - Verify)



Cross Dock High Doors and
Ground Level Doors



Large Yard: Lighted
Paved/Gravel



Fully Fenced
Concrete Block Wall &
Chain-Link



**Immediate Freeway
Access**
to I-10, 57, & 210 Fwys



1369 9th: ± 4,100 SF
Total Office Space



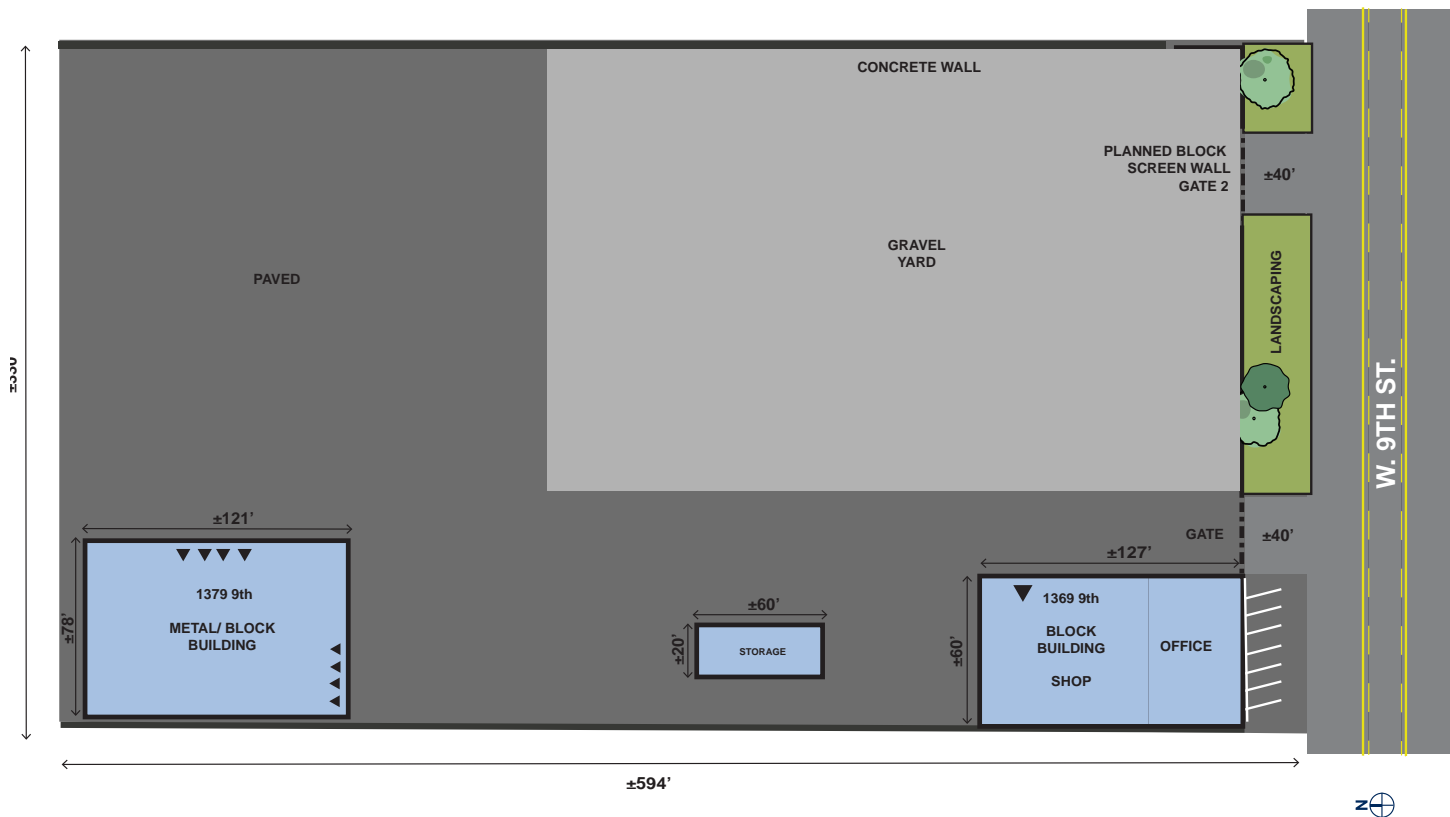
14'-16'
Clear Height

PROPERTY DETAILS	1379 9TH	1369 9TH
TOTAL BUILDING SF	9,500	8,600
OFFICE (TOTAL)	500	4,000
TRAILER POSITIONS	8	0
DOCK HIGH DOOR (S)	5	0
GROUND LEVEL DOOR	1	2
SPRINKLER	NO	NO
CLEAR HEIGHT	16'	14'
POWER-VERIFY	240V, 3 Phase	240V, 3 Phase
*Verify and review upon your own findings/specifications		

FOR LEASE 1369 -1379 W. 9TH ST. | UPLAND, CA 91786



SITE PLAN



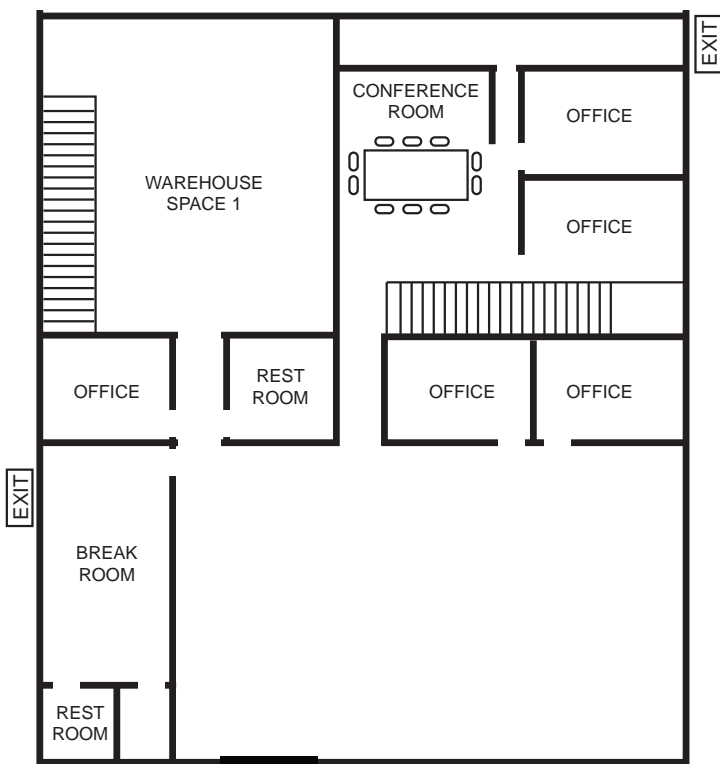
*NOT TO SCALE

FOR LEASE 1369 -1379 W. 9TH ST. | UPLAND, CA 91786

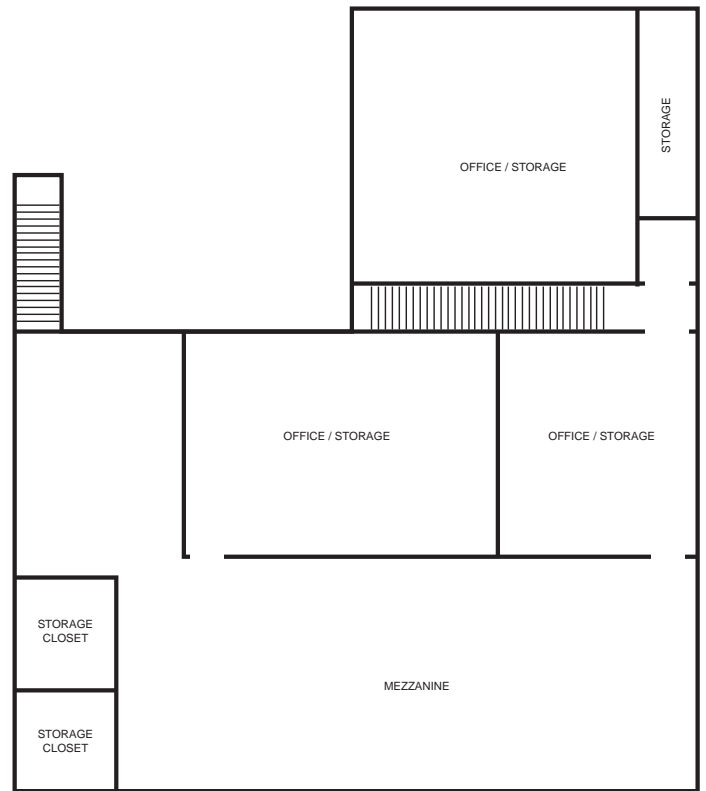


FLOOR PLAN

GROUND FLOOR



SECOND FLOOR

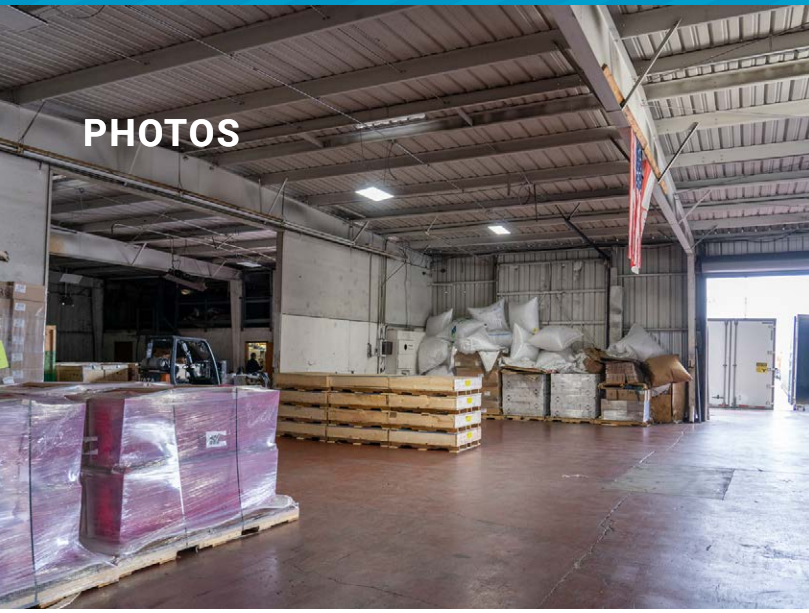


*NOT TO SCALE

FOR LEASE 1369 -1379 W. 9TH ST. | UPLAND, CA 91786



PHOTOS



FOR LEASE 1369 -1379 W. 9TH ST. | UPLAND, CA 91786



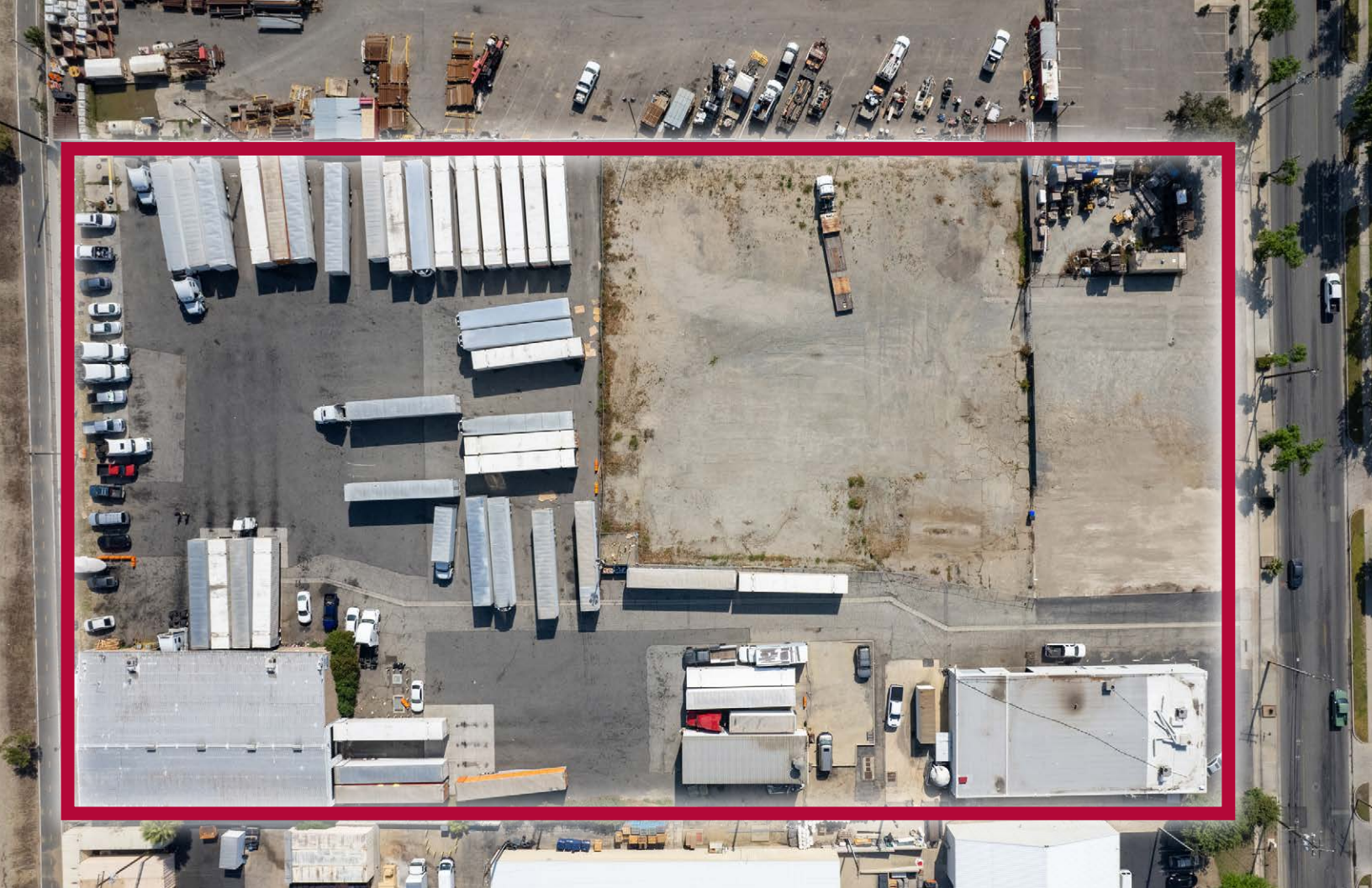
PHOTOS



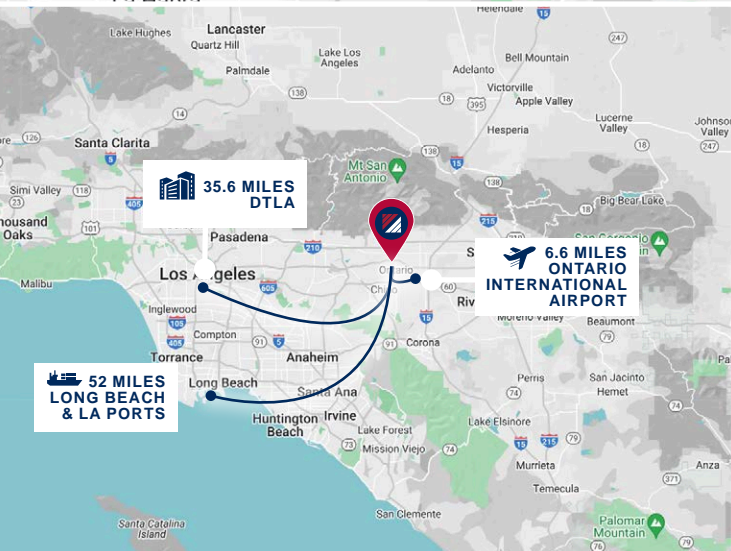
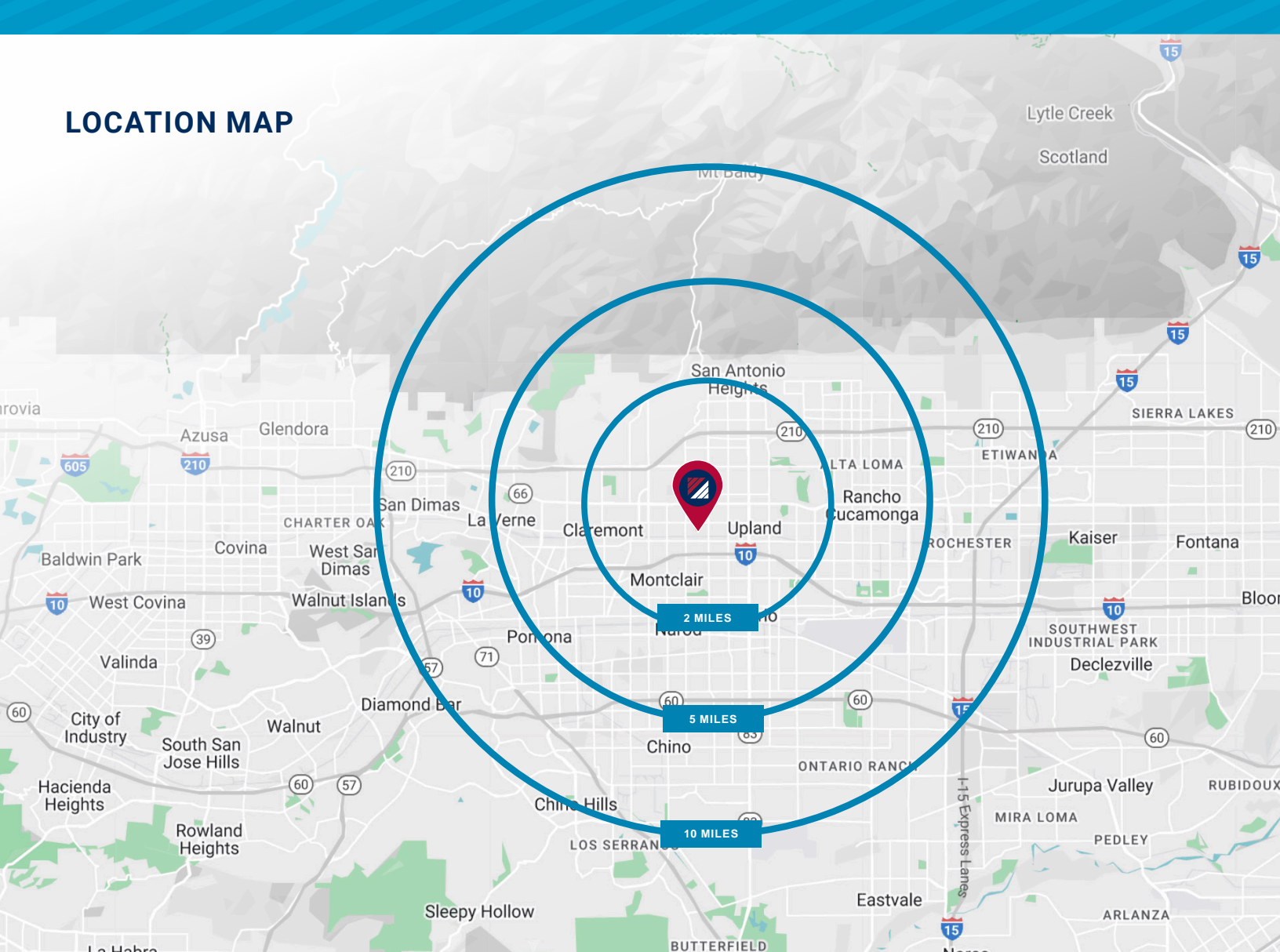
FOR LEASE 1369 -1379 W. 9TH ST. | UPLAND, CA 91786



AERIALS



LOCATION MAP



DEMOGRAPHICS	2 MI.	5 MI.	10 MI.
2010 Population	70,801	409,367	899,140
2023 Population	76,132	422,424	947,060
2028 Population Projection	76,892	422,103	948,644
Avg Household Income	\$90,701	\$99,411	\$109,228
Median Household Income	\$72,566	\$77,693	\$88,585
Total Specified Consumer Spending (\$)	\$844.2M	\$4.7B	\$11.3B

FOR LEASE 1369 -1379 W. 9TH ST. | UPLAND, CA 91786



AMENITIES



FOR LEASE 1369 -1379 W. 9TH ST. | UPLAND, CA 91786

